

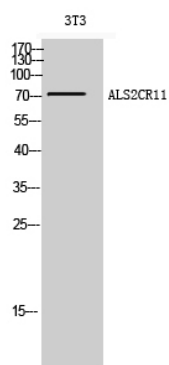


ALS2CR11 Polyclonal Antibody

Catalog No	YP-Ab-12679
Isotype	IgG
Reactivity	Human;Rat;Mouse;
Applications	WB;ELISA
Gene Name	ALS2CR11
Protein Name	Amyotrophic lateral sclerosis 2 chromosomal region candidate gene 11 protein
Immunogen	The antiserum was produced against synthesized peptide derived from human ALS2CR11. AA range:491-540
Specificity	ALS2CR11 Polyclonal Antibody detects endogenous levels of ALS2CR11 protein.
Formulation	Liquid in PBS containing 50% glycerol, 0.5% BSA and 0.02% sodium azide.
Source	Polyclonal, Rabbit,IgG
Purification	The antibody was affinity-purified from rabbit antiserum by affinity-chromatography using epitope-specific immunogen.
Dilution	Western Blot: 1/500 - 1/2000. ELISA: 1/40000. Not yet tested in other applications.
Concentration	1 mg/ml
Purity	≥90%
Storage Stability	-20°C/1 year
Synonyms	ALS2CR11; Amyotrophic lateral sclerosis 2 chromosomal region candidate gene 11 protein
Observed Band	72kD
Cell Pathway	
Tissue Specificity	Testis,
Function	
Background	An autosomal recessive form of juvenile amyotrophic lateral sclerosis was originally mapped to a region of chromosome 2 that includes this gene. The encoded protein contains a calcium-dependent membrane targeting C2 domain. This domain is often found in proteins that are involved in membrane trafficking and signal transduction. [provided by RefSeq, Jun 2016],
matters needing attention	Avoid repeated freezing and thawing!
Usage suggestions	This product can be used in immunological reaction related experiments. For more information, please consult technical personnel.



Products Images

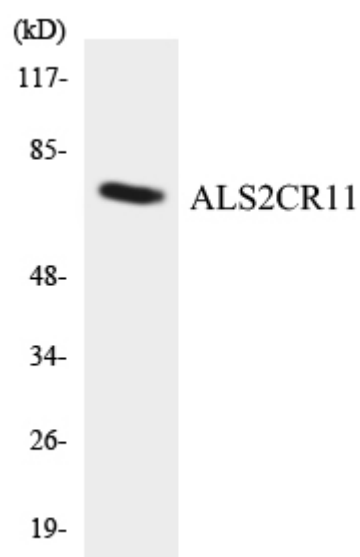


Western Blot analysis of 3T3 cells using ALS2CR11 Polyclonal Antibody



Western blot analysis of ALS2CR11 Antibody. The lane on the right is blocked with the ALS2CR11 peptide.

ALS2CR1



Western blot analysis of the lysates from COLO205 cells using ALS2CR11 antibody.